



300 HUEY LENARD LOOP | WEST MONROE | LA 71292
OFFICE: 318-397-3000 | FAX: 318-397-3040
SERVICE & TECH SUPPORT: 800-551-4955
SUPERLIFT.COM

2024 GM COLORADO AND CANYON 4WD/2WD Leveling and 2" Kit INSTALLATION INSTRUCTIONS



**THANK YOU FOR CHOOSING SUPERLIFT FOR ALL
YOUR SUSPENSION NEEDS!**

MAKE SURE YOU HAVE THE CORRECT LIFT FOR YOUR VEHICLE. Double check the Year, Make, Model, Lift Height and KIT Part Numbers.

Prior to beginning the installation, open the boxes and check the included components compared to the parts breakdown. Check all parts and hardware in the box with the parts list below. Be sure you have all needed parts and know where they install.

If you find a packaging error, contact SUPERLIFT directly. Do not contact the dealer where the system was originally purchased. You will need the control number from each box when calling; this number is located at the bottom of the part number label and to the right of the bar code.

How to read the kit breakdown charts:

The 'KIT BREAKDOWN' lists part numbers, quantities, and part description of the individual components and hardware bags that are included in each box.

KIT BREAKDOWN		
Kit Part Number	40053	
Part Number	Qty.	Part Description
55-01-40053	2	Leveling Spacer, 2 Inch
77-40053	1	Hardware Bag
Kit Part Number 40054 (AT4)		
Part Number	Qty.	Part Description
55-01-40054	2	Leveling Spacer, 1 Inch
77-40053	1	Hardware Bag
OPTIONAL REAR KIT		
Part Number	Qty.	Part Description
55-01-203	2	Rear Lift Blocks
10422	4	9/16" x 2-1/2" x 8" - SQ Ubolt
77-1509	1	Hardware Bag

Step	Part Number	Qty. per Kit	Description	New Attaching Hardware	Qty. per Bracket	Hardware Bag Number
FRONT						
14	55-01-40053	2	strut spacer, lower	7/16" x 4" bolt, coarse thread	2	77-40053
	Or			7/16" nyloc nut	2	
	55-01-40054	2	AT4 strut spacer, lower	7/16" SAE washer	2	
REAR (Optional)						
6	55-01-203	2	rear lift block	10422 - ubolt	4	77-1509
				ubolt washer	8	
				ubolt nut	8	

INTRODUCTION

Installation requires a professional mechanic. In addition to these instructions, professional knowledge of disassembly and reassembly procedures and post installation checks must be known.

Prior to beginning, inspect the vehicles steering, driveline, and brake systems, paying close attention to the suspension link arms and bushings, sway bars and bushings, tie rod ends, pitman arm, idler arm, ball joints and wheel bearings. The overall vehicle must be in excellent working condition; repair or replace all worn parts. Read instructions several times before starting. Read each step completely as you go.

Be sure you have all needed parts and know where they install.

NOTES

- Do not install this suspension system in conjunction with any other type of aftermarket or fabricated components to gain additional suspension height.
- Front end alignment is necessary.
- A foot-pound torque reading is given in parenthesis () after each appropriate fastener.
- Tool size is given in brackets [] after each appropriate step.
- Prior to attaching components, be sure all mating surfaces are free of grit, grease, excessive undercoating, etc.
- Always wear safety glasses when using power tools.
- A factory service manual should be on hand for reference.

BEFORE YOU DRIVE

Check all fasteners for proper torque. Check to ensure for adequate clearance between all rotating, mobile, fixed, and heated members. Verify clearance between exhaust and brake lines, fuel lines, fuel tank, floor boards and wiring harness. Check steering components for clearance.

Test and inspect brake system. Perform steering sweep to ensure front brake hoses have adequate slack and do not contact any rotating, mobile or heated members. Inspect rear brake hoses at full extension for adequate slack. Failure to perform hose check/replacement may result in component failure.

Perform head light check and adjustment.

It is the ultimate buyer's responsibility to have all bolts and nuts checked for tightness after the first 100 miles and then every 1000 miles. The steering, suspension and driveline systems, plus wheel alignment should be inspected by a qualified professional mechanic at least every 3000 miles.

TIRES AND WHEELS

This kit was engineered using a 285/65/R18, tire on the factory 18" wheel. Any larger tire and wheel combination other than listed will require vehicle trimming.

Larger tire and wheel combinations may increase leverage on suspension, steering, and related components. When selecting combinations larger than factory, consider the additional stress you could be inducing on the factory and related components.

All tire and wheel combinations should be test fit prior to installation.

IMPORTANT DISCLAIMER

The provided tire and wheel fitments are approximate. Actual dimensions of a given tire size can vary considerably from one brand to another. Manufacturers' wheel offset and backspacing measurement points are not always consistent. Backspacing greatly impacts tire-to-fender clearance when turning. Wheel width and backspacing influence whether the tires protrude past the fenders and to what extent.

FRONT INSTALLATION

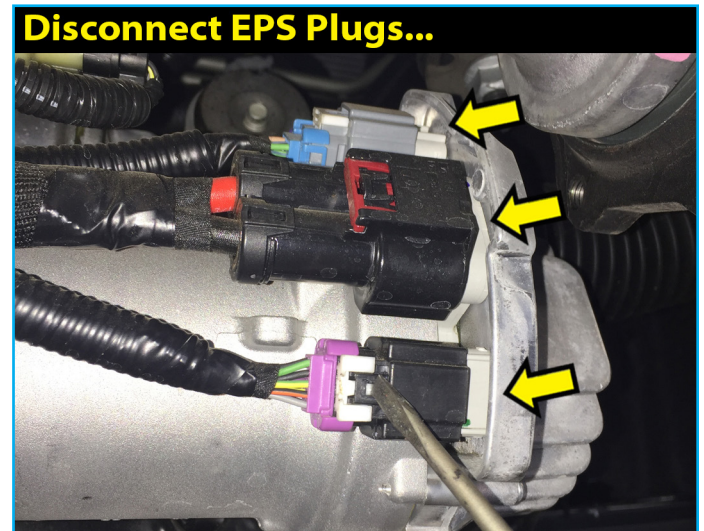
NOTE: Save ALL factory components and hardware for reuse, unless noted.

1. Disconnect the battery.
2. Chock the rear tires and place the transmission in neutral. Raise the front of the vehicle and secure on jack stands.
3. Remove the front tires and wheels. [22mm]
4. [Illustration 1] If equipped, remove the factory skid plates. [13mm]
5. [Illustration 2] Disconnect the electronic power steering (EPS) two plugs.

[Illustration 1]

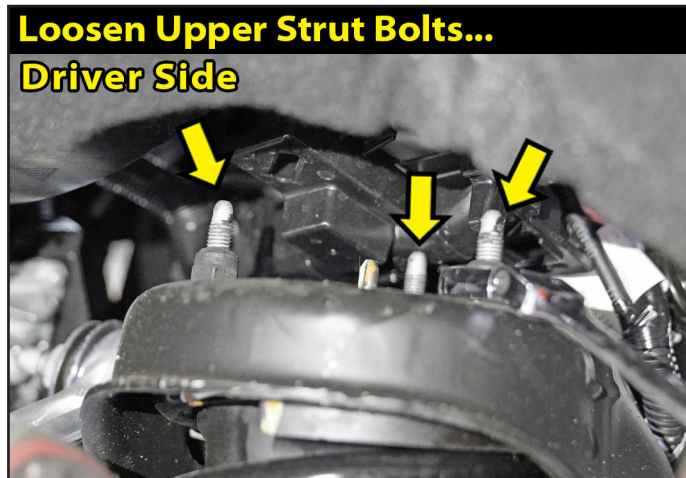


[Illustration 2]

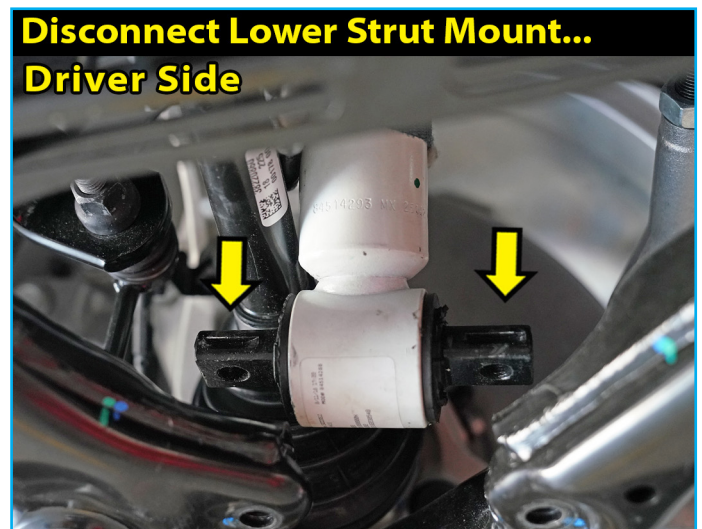


6. Disconnect the tie rod end from the steering knuckle. [21mm]
7. Disconnect the sway bar link from the knuckle. [21mm, 10mm]
8. Loosen the upper control arm bolts. [21mm]
9. Loosen the upper ball joint nut, then with the nut still attached, unseat the ball joint from the knuckle; do not fully remove. [18mm]

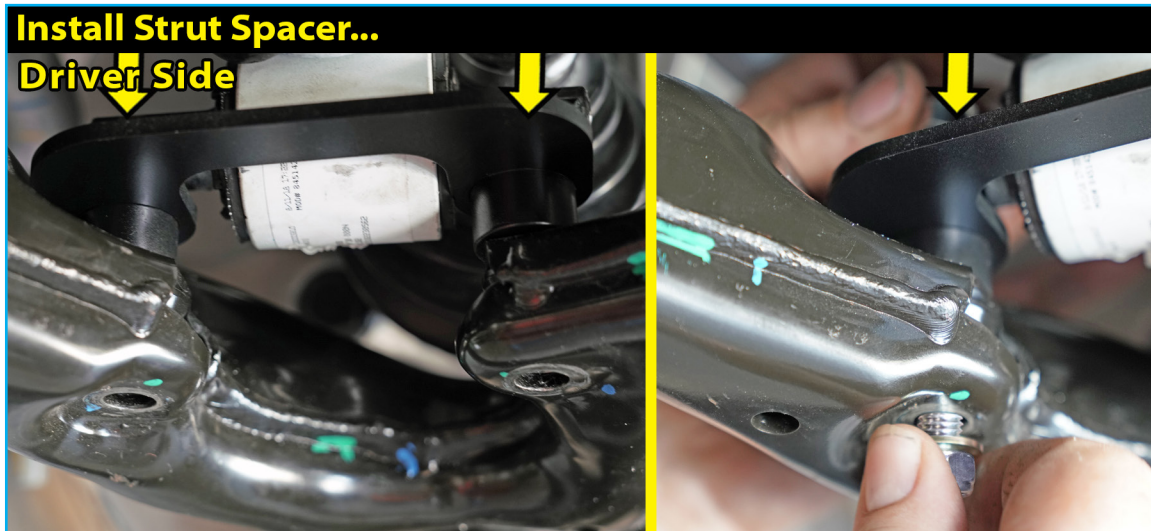
[Illustration 3]



[Illustration 4]



10. Support the lower control arm with a jack.
11. Loosen the lower control arm bolts. [24mm]
12. [Illustration 3] Loosen the upper strut hardware; do not remove. [18mm]
13. [Illustration 4] Remove the lower strut hardware. [15mm]
14. [Illustration 5] Lower the jack to create room to install the new lower strut spacer (55-01-40053 or 55-01-40054 for AT4) between the lower strut mount and the lower control arm. Make sure to not over extend any ABS or brake lines.
15. [Illustration 5] Raise the jack until the spacer and strut are seated to the lower control arm and secure the strut spacer to the lower control arm and strut using the supplied 7/16" hardware. [5/8"] (50)

[Illustration 5]

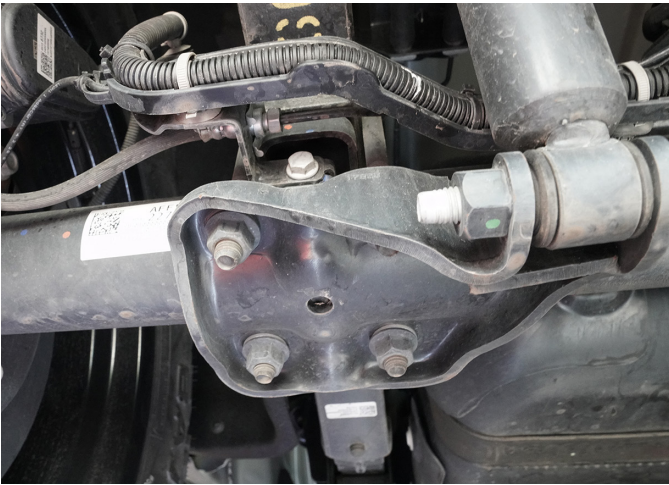
16. Tighten the upper strut hardware.
17. Tighten the lower control arm bolts.
18. Tighten the upper ball joint.
19. Tighten the upper control arm bolts.
20. Reconnect the sway bar link to the knuckle.
21. Reconnect the tie rod to the knuckle.
22. Reconnect the EPS plugs.
23. Reinstall the factory skid plates using the factory hardware.
24. Reinstall the tires and wheels and lower vehicle to the ground.
25. Reconnect the battery.

REAR INSTALLATION (OPTIONAL)

NOTE: Save ALL factory components and hardware for reuse, unless noted.

1. Chock the front tires and place the transmission in neutral. Raise the rear of the vehicle and secure on jack stands.
2. Support the rear axle with a jack.
3. [Illustration 1] Remove the ubolts. [19mm]
4. Lower the axle.
5. [Illustration 2] Install the new rear lift block (55-01-203) on the top of the axle under the leaf spring (if equipped with factory block, place the new lift block on top of the factory block).
6. [Illustration 2] Raise the jack and make sure the leaf spring is seated properly in the new lift block.
7. [Illustration 2] Install the new rear ubolts (10422) and secure using the supplied hardware.
8. Lower vehicle to the ground.

[Illustration 1]



[Illustration 2]



FINAL CHECKS

1. Check all hardware for proper torque specifications.
2. With the vehicle on the ground, check all components for proper operation and clearances. Pay special attention to the clearance between the tires and wheels, brake hoses, wiring, etc. Check tire and wheel clearance with the fenders and bumper as well as with the steering knuckle. Depending on your choice of tire size and wheel width, it is not uncommon to trim the lower plastic valance of the bumper and inner fender shroud slightly to add proper tire clearance while turning.
3. Realign the vehicle to the factory specifications.
4. Adjust headlights to the proper setting.
5. Activate the four wheel drive system and check for proper function.
6. Install the "Warning to Driver" decal inside the vehicle within the driver's view.

IMPORTANT MAINTENANCE INFORMATION

It is the ultimate buyer's responsibility to have all bolts / nuts checked for tightness after the first 100 miles and then every 1000 miles. The steering, suspension and driveline systems, plus wheel alignment should be inspected by a qualified professional mechanic at least every 3000 miles.

LIMITED LIFETIME WARRANTY / WARNINGS

Your SUPERLIFT® product is covered by the Limited Warranty explained below that gives you specific legal rights. This limited warranty is the only warranty SUPERLIFT® makes in connection with your product purchase. SUPERLIFT® neither assumes nor authorizes any retailer or other person or entity to assume for it any other obligation or liability in connection with this product or limited warranty.

SUPERLIFT, LLC, LIMITED LIFETIME WARRANTY

What is covered? Subject to the terms below, SUPERLIFT® will repair or replace its products found defective in materials or workmanship for so long as the original purchaser owns the vehicle on which the product was originally installed. Your warranter is SUPERLIFT, LLC, doing business as SUPERLIFT® Suspension Systems ("SUPERLIFT®").

What is not covered? Your SUPERLIFT® Limited Warranty does not cover products SUPERLIFT® determines to have been damaged by or subjected to:

- Alteration, modification or failure to maintain.
- Normal wear and tear (bushings, rod ends, etc.). Scratches or defects in product finishes (powder coating, plating, etc.).
- Damage to, or resulting from, the vehicle's electronic stability system, related components or other vehicle systems.
- Racing or other vehicle competitions or contests. Accidents, impact by rocks, trees, obstacles or other aspects of the environment.
- Theft, vandalism or other intentional damage.

Remedy Limited to Repair or Replacement. The exclusive remedy provided hereunder shall, upon SUPERLIFT's inspection and at SUPERLIFT's option, be either repair or replacement of the product covered under this Limited Warranty. Customers requesting warranty consideration should contact SUPERLIFT® by phone (1-800-551-4955) to obtain a Returned Goods Authorization number. All removal, shipping and installation costs are customer's responsibility.

If a replacement part is needed before the SUPERLIFT® part in question can be returned, you must first purchase the replacement part. Then, if the part in question is deemed warrant-able, you will be credited / refunded.

OTHER LIMITATIONS - EXCLUSION OF DAMAGES - YOUR RIGHTS UNDER STATE LAW

- Neither SUPERLIFT® nor your independent SUPERLIFT® dealer are responsible for any time loss, rental costs, or for any incidental, consequential or other damages you may have.
- This Limited Warranty gives you specific rights, and this is the only warranty SUPERLIFT® makes in connection with your product purchase. You may also have other rights that vary from state to state. For example, while all implied warranties are disclaimed herein, any implied warranty required by law is limited to the terms of our Limited Lifetime Warranty as described above. Some states do not allow limitations of how long an implied warranty lasts and / or do not allow the exclusion or limitation of incidental or consequential damages, so the limitations and exclusions herein may not apply to you. SUPERLIFT® neither assumes nor authorizes any retailer or other person or entity to assume for it any other obligation or liability in connection with this product or Limited Warranty.

IMPORTANT PRODUCT USE AND SAFETY INFORMATION AND WARNINGS

As a general rule, the taller a vehicle is, the easier it will roll over. Offset, as much as possible, what is lost in rollover resistance by increasing tire track width. In other words, go "wide" as you go "tall"; always use as wide a tire and wheel combination as feasible to enhance vehicle stability. We strongly recommend, because of rollover possibility, that the vehicle be equipped with a functional roll bar and cage system. Seat belts and shoulder harnesses should be worn at all times. Avoid situations where a side rollover may occur.

Generally, braking performance and capabilities are decreased when significantly larger / heavier tires and wheels are used. Take this into consideration while driving. Also, changing axle gear ratios or using tires that are taller or shorter than factory height will cause an erroneous speedometer reading. On vehicles equipped with an electronic speedometer, the speed signal impacts other important functions as well. Speedometer recalibration for both mechanical and electronic types is highly recommended.

Do not add, alter, or fabricate any factory or aftermarket parts to increase vehicle height over the intended height of the SUPERLIFT® product purchased. Mixing component brands is not recommended.

SUPERLIFT SUSPENSION
300 Huey Lenard Loop Rd.
West Monroe, Louisiana 71292
Phone: (318) 397-3000
Sales / Tech: (800) 551-4955
Fax: (318) 397-3040
SUPERLIFT.COM